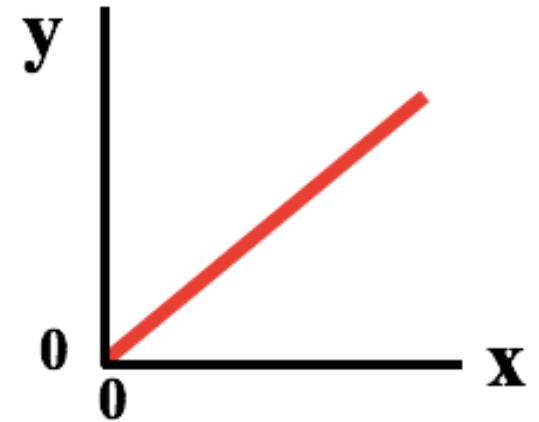


Question 1:

One of these representations is not like the others. Which one doesn't belong?

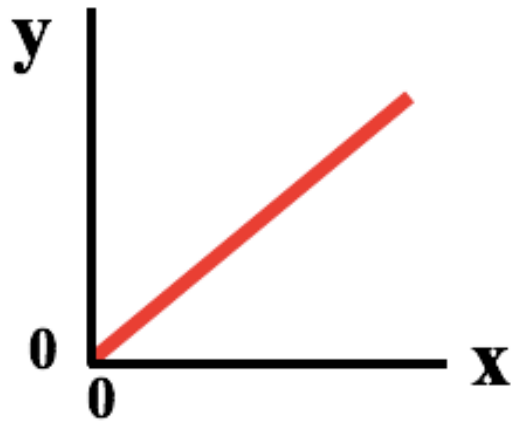
x	y
0.0	3.0
1.0	3.0
2.0	3.0
3.0	3.0
4.0	3.0

**"As the value of
x is doubled,
the value of y
stays the
same."**



Question 2:

One of these representations is not like the others. Which one doesn't belong?

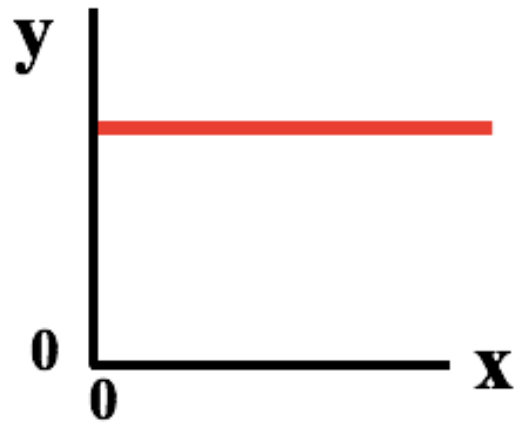


x	y
0.0	4.0
1.0	4.0
2.0	4.0
3.0	4.0
4.0	4.0

**"As the value of
x is doubled,
the value of y
stays the
same."**

Question 3:

One of these representations is not like the others. Which one doesn't belong?



**"As the value of
x is doubled,
the value of y is
doubled."**

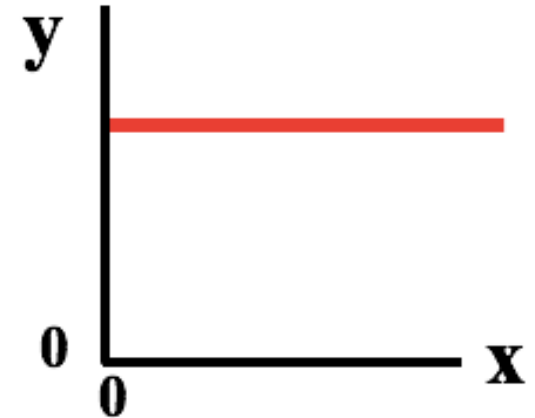
x	y
0.0	4.0
1.0	4.0
2.0	4.0
3.0	4.0
4.0	4.0

Question 4:

One of these representations is not like the others. Which one doesn't belong?

x	y
0.0	6.0
1.0	6.0
2.0	6.0
3.0	6.0
4.0	6.0

**"As the value of
x is doubled,
the value of y is
doubled."**

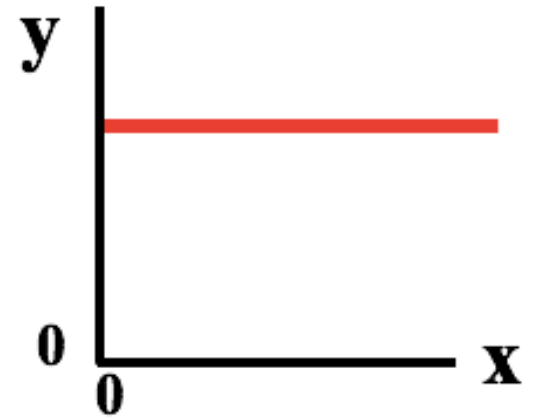


Question 5:

One of these representations is not like the others. Which one doesn't belong?

x	y
0.0	0.0
1.0	4.0
2.0	8.0
3.0	12.0
4.0	16.0

**"The
relationship
between x
and y is
linear."**

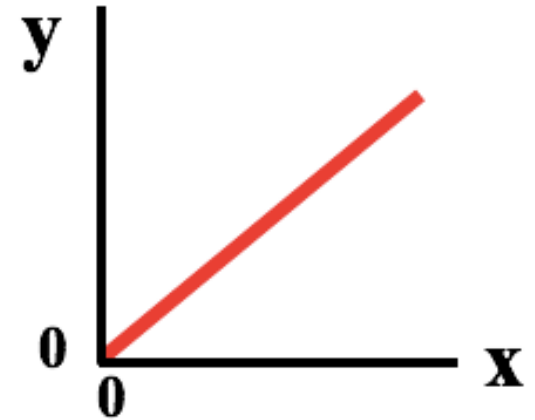


Question 6:

One of these representations is not like the others. Which one doesn't belong?

**"The
relationship
between x
and y is
linear."**

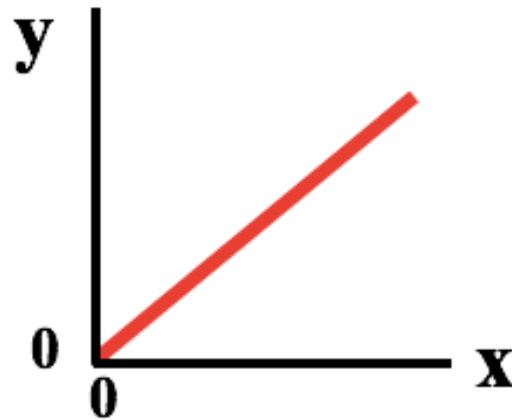
x	y
0.0	0.0
1.0	1.0
2.0	4.0
3.0	9.0
4.0	16.0



Question 7:

One of these representations is not like the others. Which one doesn't belong?

**"As the value
of x is
doubled, the
value of y is
halved."**



x	y
0.0	0.0
1.0	3.0
2.0	6.0
3.0	9.0
4.0	12.0

Question 8:

One of these representations is not like the others. Which one doesn't belong?



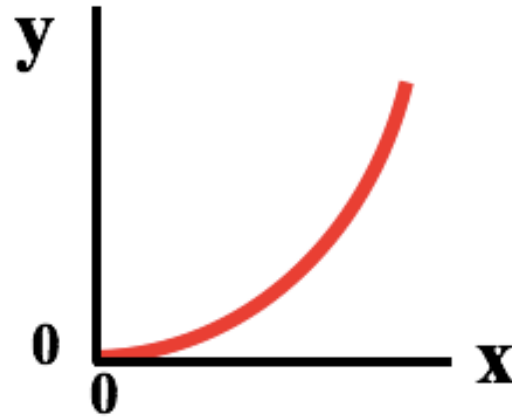
x	y
0.0	4.0
1.0	4.0
2.0	4.0
3.0	4.0
4.0	4.0

**"As the value
of x is
doubled, the
value of y is
doubled."**

Question 9:

One of these representations is not like the others. Which one doesn't belong?

x	y
0.0	0.0
1.0	1.0
2.0	4.0
3.0	9.0
4.0	16.0

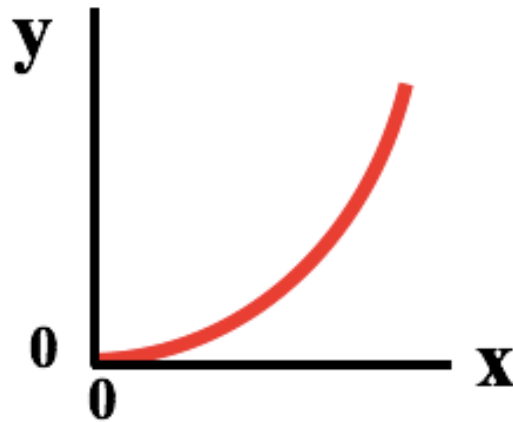


**"As the value
of x is
doubled, the
value of y is
doubled."**

Question 10:

One of these representations is not like the others. Which one doesn't belong?

**"As the value
of x is
doubled, the
value of y is
quadrupled."**

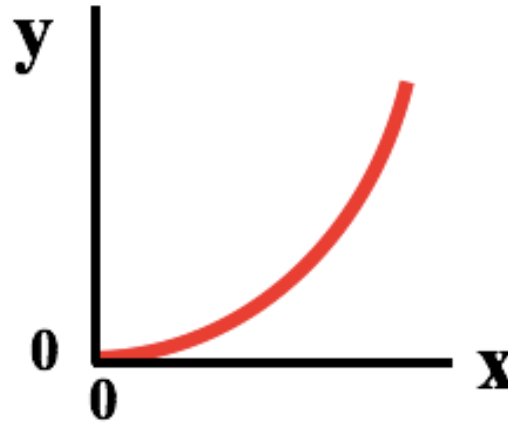


x	y
0.0	0.0
1.0	2.0
2.0	4.0
3.0	6.0
4.0	8.0

Question 11:

One of these representations is not like the others. Which one doesn't belong?

x	y
0.0	0.0
1.0	2.0
2.0	4.0
3.0	6.0
4.0	8.0

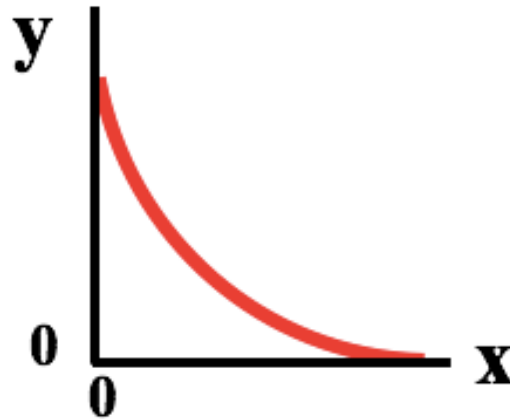


**"As the value
of x is
doubled, the
value of y is
quadrupled."**

Question 12:

One of these representations is not like the others. Which one doesn't belong?

"As the value of x is doubled, the value of y is quadrupled."

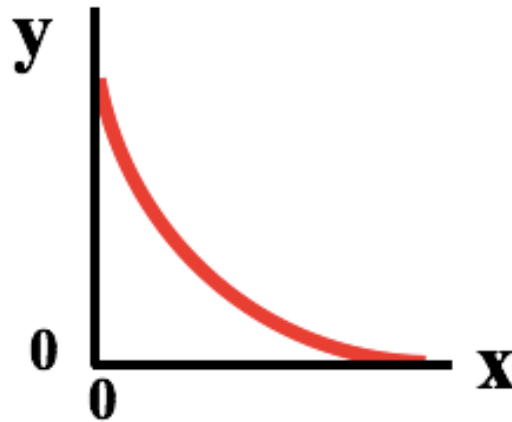


x	y
0.0	0.0
1.0	1.0
2.0	4.0
3.0	9.0
4.0	16.0

Question 13:

One of these representations is not like the others. Which one doesn't belong?

x	y
8.0	3.0
6.0	4.0
4.0	6.0
3.0	8.0
2.0	12.0

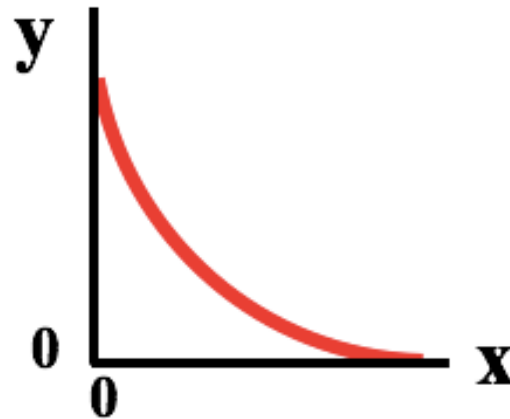


**"The
relationship
between x and
y is
quadratic."**

Question 14:

One of these representations is not like the others. Which one doesn't belong?

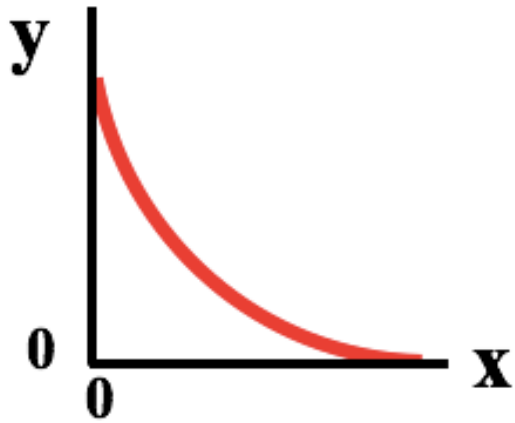
**"As the value
of x is
doubled, the
value of y is
quadrupled."**



x	y
4.0	12.0
6.0	8.0
8.0	6.0
12.0	4.0
16.0	3.0

Question 15:

One of these representations is not like the others. Which one doesn't belong?



**"As the value
of x is
doubled, the
value of y is
halved."**

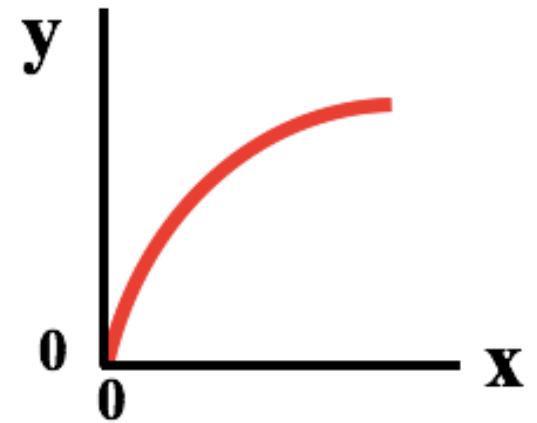
x	y
1.0	12.0
2.0	8.0
3.0	4.0
4.0	2.0
5.0	1.0

Question 16:

One of these representations is not like the others. Which one doesn't belong?

**"The
quantities x
and y are
inversely
proportional."**

x	y
1.0	12.0
2.0	6.0
3.0	4.0
4.0	3.0
5.0	2.4

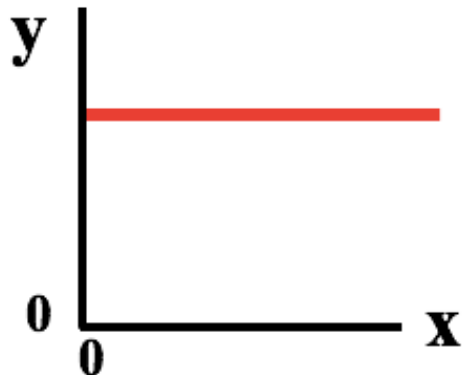


Question 17:

One of these representations is not like the others. Which one doesn't belong?

x	y
0.0	0.0
1.0	3.0
2.0	6.0
3.0	9.0
4.0	12.0

**"The
relationship
between the
quantities x
and y is linear."**

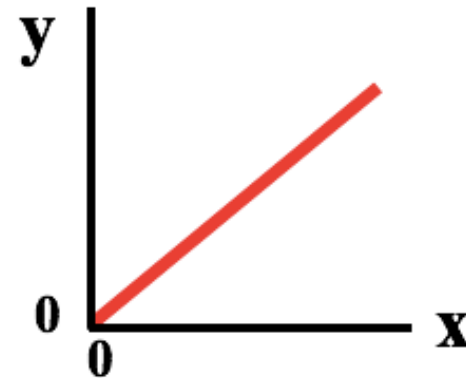


**The data are
described by
 $y = 3 \cdot x$**

Question 18:

One of these representations is not like the others. Which one doesn't belong?

**"The
relationship
between the
quantities x
and y is linear."**



**The data are
described by
 $y = 3 \cdot x + 3$**

x	y
0.0	0.0
1.0	3.0
2.0	6.0
3.0	9.0
4.0	12.0

Question 19:

One of these representations is not like the others. Which one doesn't belong?



**The data are
described by
 $y = 4 \cdot x$**

x	y
0.0	0.0
1.0	4.0
2.0	8.0
3.0	12.0
4.0	16.0

**"As the value
of x is
doubled, the
value of y is
quadrupled."**

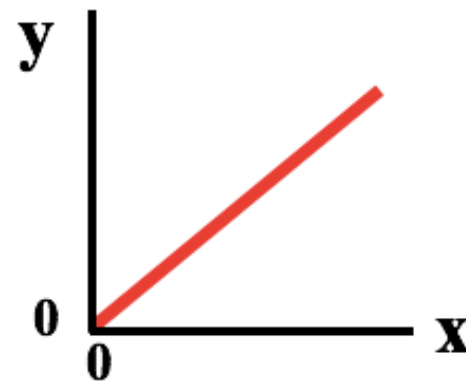
Question 20:

One of these representations is not like the others. Which one doesn't belong?

**$y = k \cdot x$
where k is a
constant.**

x	y
0.0	0.0
1.0	6.0
2.0	12.0
3.0	24.0
4.0	48.0

**"As the value
of x is
doubled, the
value of y is
doubled."**



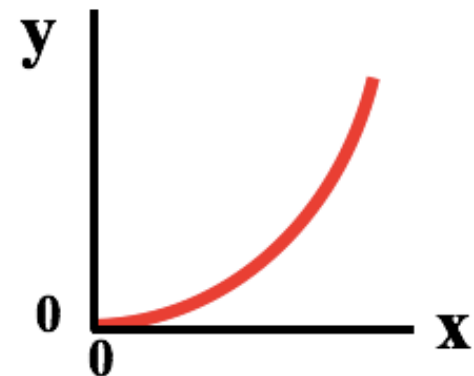
Question 21:

One of these representations is not like the others. Which one doesn't belong?

x	y
0.0	0.0
1.0	1.0
2.0	4.0
3.0	9.0
4.0	16.0

**"As the value
of x is
doubled, the
value of y is
doubled."**

**The data are
described by
 $y = x^2$**

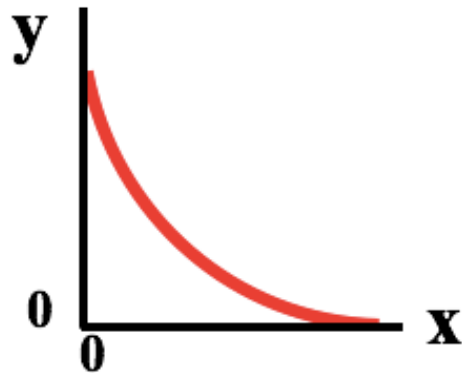


Question 22:

One of these representations is not like the others. Which one doesn't belong?

**"The
relationship
between x and
y is
quadratic."**

x	y
0.0	0.0
1.0	2.0
2.0	8.0
3.0	18.0
4.0	32.0



**The data are
described by
 $y = 2 \cdot x^2$**

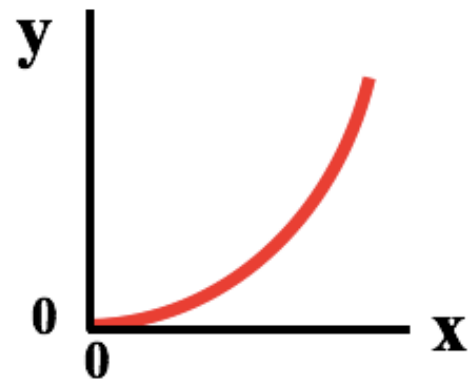
Question 23:

One of these representations is not like the others. Which one doesn't belong?

**The data are
described by
 $y = 3 \cdot x^2$**

**"As the value
of x is
doubled, the
value of y is
squared."**

x	y
0.0	0.0
1.0	3.0
2.0	12.0
3.0	27.0
4.0	48.0

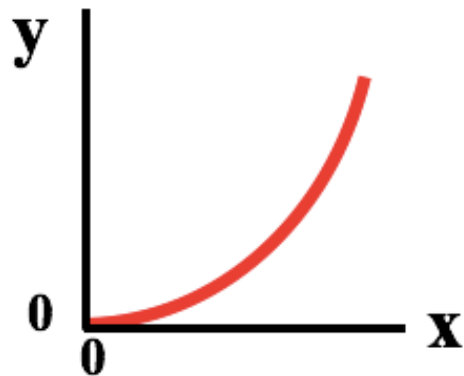


Question 24:

One of these representations is not like the others. Which one doesn't belong?

**$y = k \cdot x^2$
where k is
a constant.**

**"As the value
of x is
doubled, the
value of y is
quadrupled."**



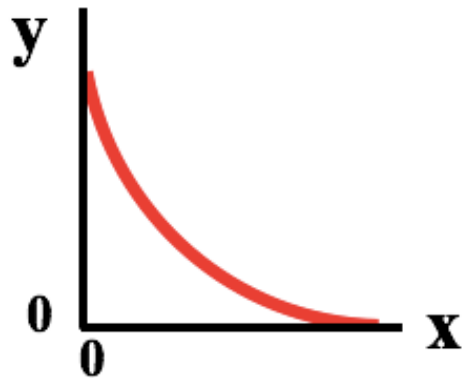
x	y
0.0	0.0
1.0	2.0
2.0	4.0
3.0	16.0
4.0	25.0

Question 25:

One of these representations is not like the others. Which one doesn't belong?

x	y
1.0	12.0
2.0	6.0
3.0	4.0
4.0	3.0
5.0	2.4

**The data are
described by
 $x \cdot y = 12$**



**"The value of
y is the
reciprocal of
the value of
x."**

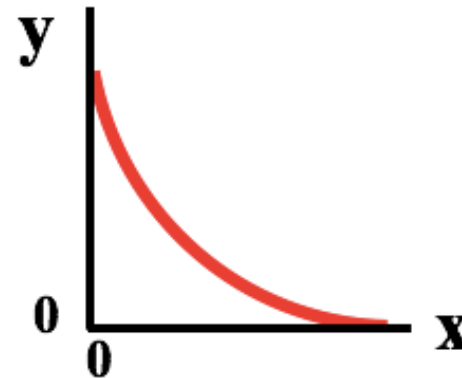
Question 26:

One of these representations is not like the others. Which one doesn't belong?

**The data are
described by
 $y = 48 \cdot x$**

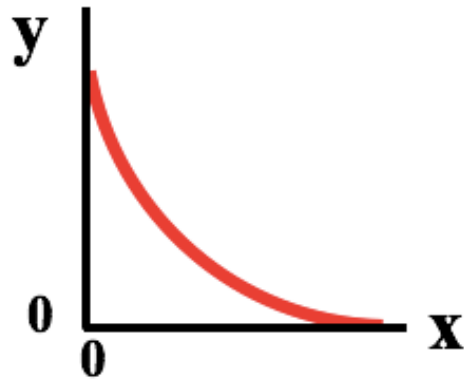
x	y
4.0	12.0
6.0	8.0
8.0	6.0
12.0	4.0
16.0	3.0

**"The
quantities x
and y have an
inverse
relationship."**



Question 27:

One of these representations is not like the others. Which one doesn't belong?



x	y
1.0	24.0
2.0	20.0
3.0	16.0
4.0	12.0
5.0	8.0

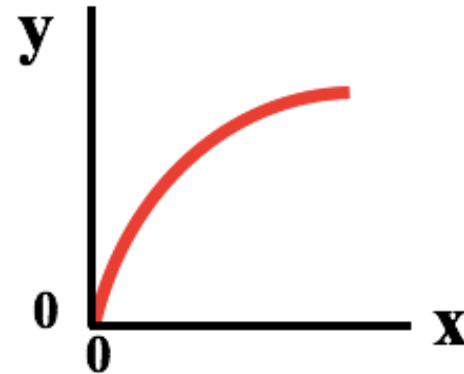
**"The
quantities x
and y have an
inverse
relationship."**

**$x \cdot y = k$
where k is a
constant.**

Question 28:

One of these representations is not like the others. Which one doesn't belong?

**The data are
described by
 $x \cdot y = 24$**

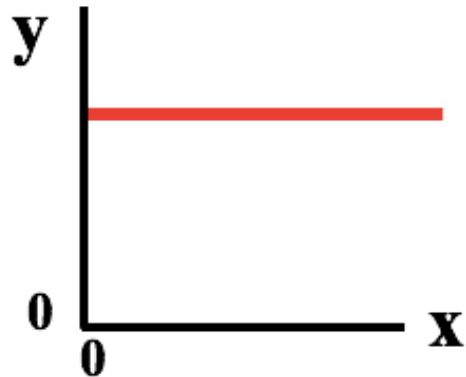


x	y
1.0	24.0
2.0	12.0
3.0	8.0
4.0	6.0
5.0	4.8

**"The
quantities x
and y have an
inverse
relationship."**

Question 29:

One of these representations is not like the others. Which one doesn't belong?



x	y
0.0	3.0
1.0	3.0
2.0	3.0
3.0	3.0
4.0	3.0

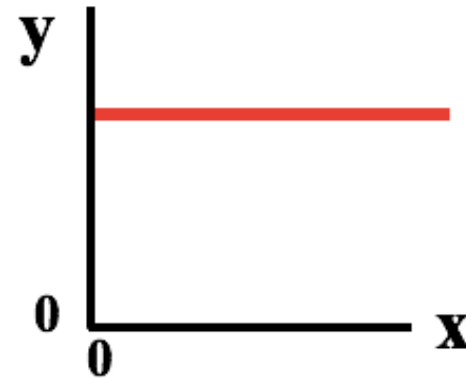
**This data is
described by
 $y = 3 \cdot x$**

**"Changes in x
have no effect
upon the
values of y."**

Question 30:

One of these representations is not like the others. Which one doesn't belong?

**"The values of x
are equal to the
values of y ."**



x	y
0.0	4.0
1.0	4.0
2.0	4.0
3.0	4.0
4.0	4.0

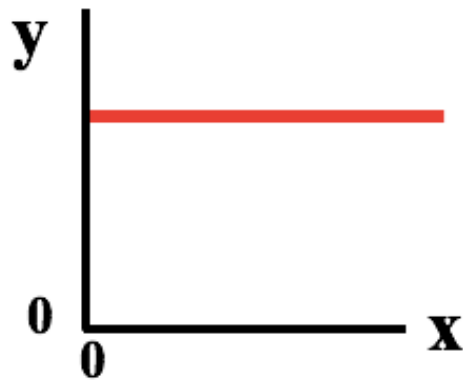
**This data is
described by
 $y = 4$**

Question 31:

One of these representations is not like the others. Which one doesn't belong?

**$y = k$
where k is a
constant.**

**"Changes in x
have no effect
upon the
values of y ."**



x	y
0.0	0.0
1.0	1.0
2.0	2.0
3.0	3.0
4.0	4.0

Question 32:

One of these representations is not like the others. Which one doesn't belong?

x	y
0.0	6.0
1.0	6.0
2.0	6.0
3.0	6.0
4.0	6.0

**This data is
described by
 $y = 6$**

**"As the value of
x is doubled,
the value of y
stays the
same."**

